



EFFECTIVE IDEAS
VISIBLE GROWTH

SOLAR STRUCTURE

We also manufacture the customized structure as per your design and your requirement.

ROOFTOP STRUCTURE

- Ballast Structure
- Low Heighted

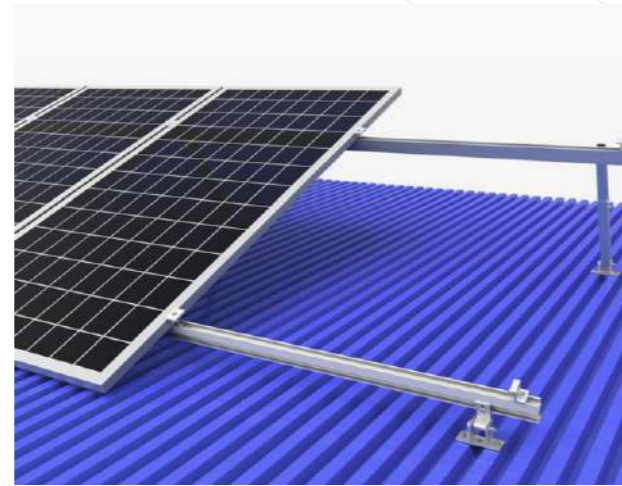
METAL ROOF STRUCTURE

- Trapezoidal Roof Structure
- Seam Roof Structure
- Round Dome Structure

GROUND MOUNTED STRUCTURE

- Fix Angle Structure
- Seasonal Tilt Structure
- 360 Degree Solar Pump Structure

CARPORT STRUCTURE



SOLAR STRUCTURE ACCESSORIES

BASE PLATE

WALL PLATE

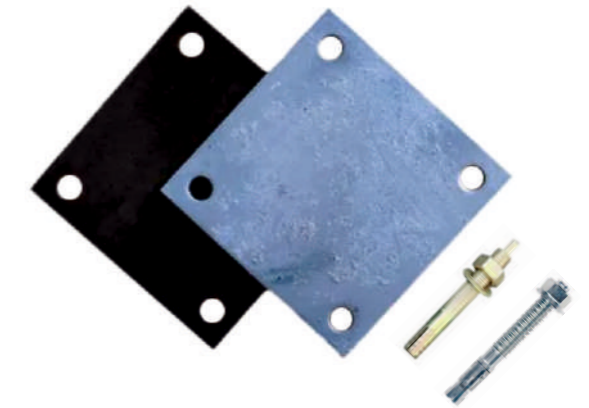
J HOOK

ALU. RAILS

EPDM RUBBER STRIP

ALU. CLAMPS

- Alu. Middle Clamp
- Alu. End Clamp
- Alu. Angle
- Alu. Nut



FASTNER

- Pin Type Anchor Fastners
- Wedge Type Anchor Fastners
- Self Tapping Screw
- Alu. Pop Rivet
- Ss Nut Bolt (ss202, Ss304, Ss314)
- Ss Allen Cap Bolt And Nut (ss202, Ss304, Ss314)

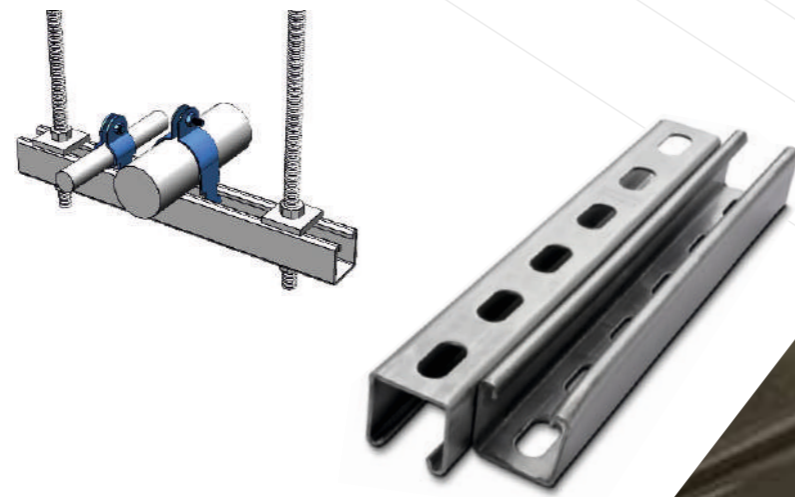
STRUT CHANNEL

SIZE: 41X21, 41X41, 41X61

THICKNESS: 1 MM TO 2.5 MM

MATERIAL: MS, Pre-galvanized, Galvalume

SURFACE FINISH: Hot Dip Galvanizing, Powder Coating



STRUT CHANNEL ACCESSORIES

SPRING NUT

DEGREE JOINTER

CANTILEVER ARM

STRUT JOINTER

STRUT CONNECTION PLATES



CLIP SECTION AND Z SECTION

HEIGHT: 50 MM TO 250 MM

WIDTH: 25 MM TO 100 MM

LIP: 8 MM TO 25 MMS

THICKNESS: 1 Mm To 4 Mm

MATERIAL: MS, Pre-galvanized, Galvalume

SURFACE FINISH:
Hot Dip Galvanizing, Powder Coating



OTHER ACCESSORIES

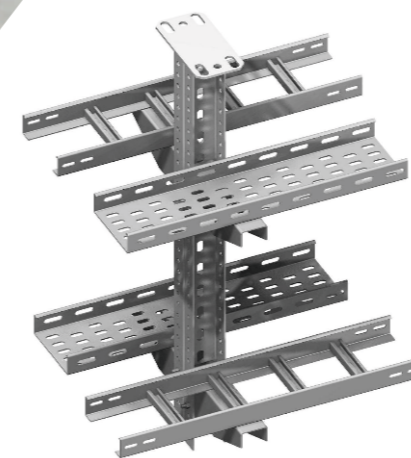
CABLE TRAY JUNCTIONS

CABLE TRAY SUPPORT

Z PATTI

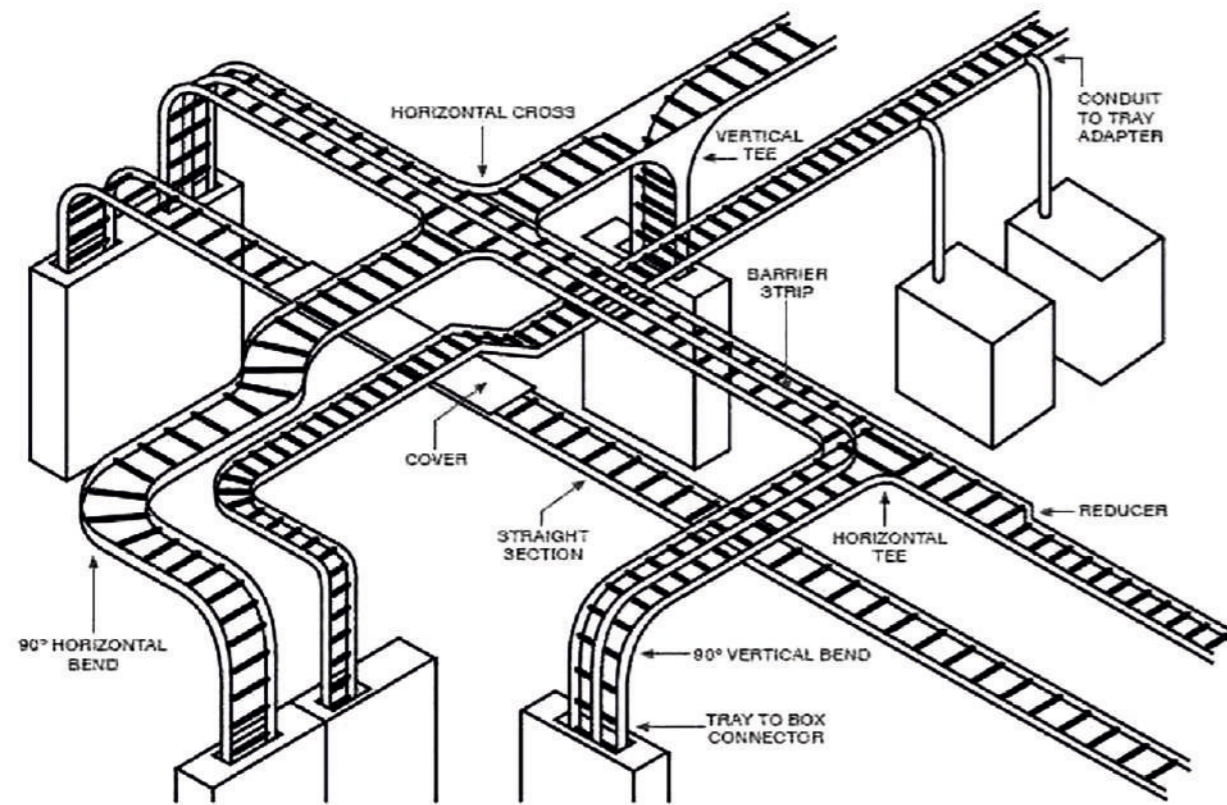
TRAY JOINTER

FASTNERS



CABLE MANAGEMENT SYSTEM

Cable Management is used to describe the way cabling is routed, organized, and supported. This involves organizing your cabling and connectivity hardware in a way that makes it easy to identify components and troubleshoot problems. This makes future upgrades and repairs easier while keeping your IT spaces professional.



LADDER TYPE CABLE TRAY

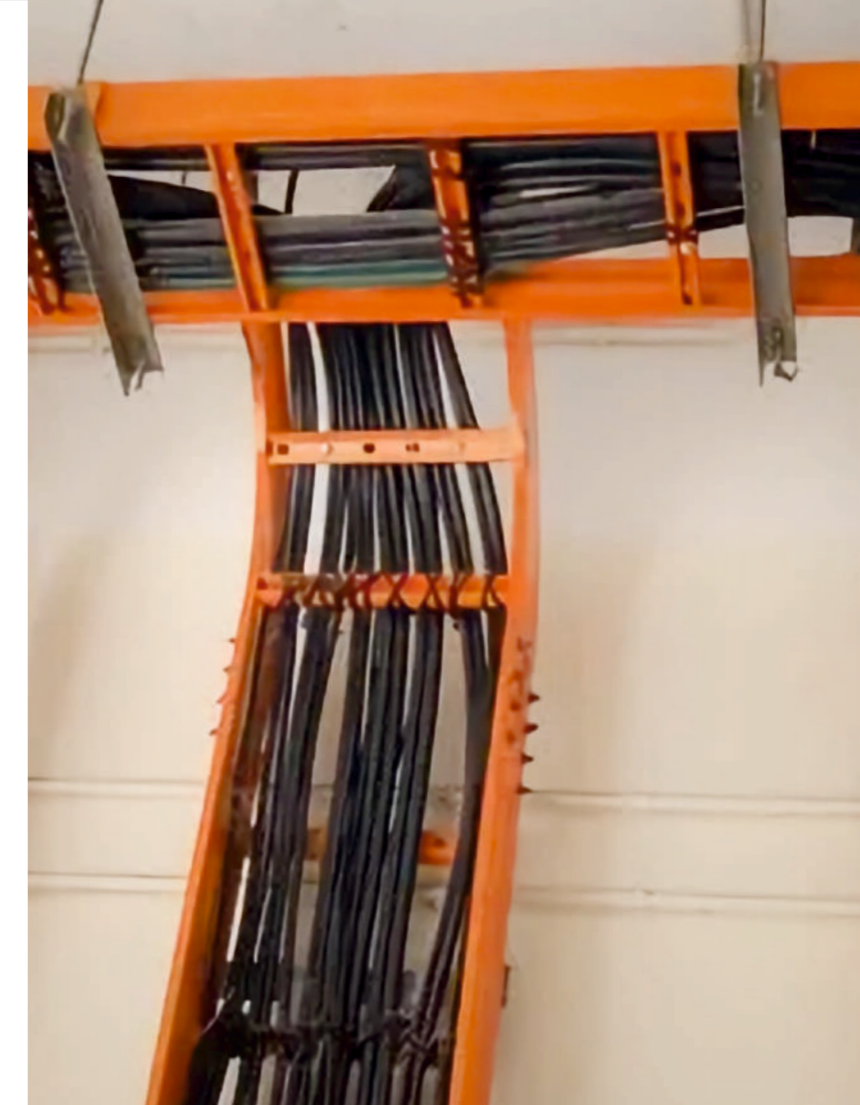
WIDTH: 150MM TO 1250 MM

HEIGHT: 50 MM TO 150 MM

THICKNESS: 1.5 MM TO 3 MM

MATERIAL: MS, Pre Galvanized

SURFACE FINISH: Powder Coating, Hot Dip Galvanizing, Zinc Plating



PERFORATED TYPE CABLE TRAY

WIDTH: 50 MM TO 600 MM

HEIGHT: 25 MM TO 150 MM

THICKNESS: 1 MM TO 2.5 MM

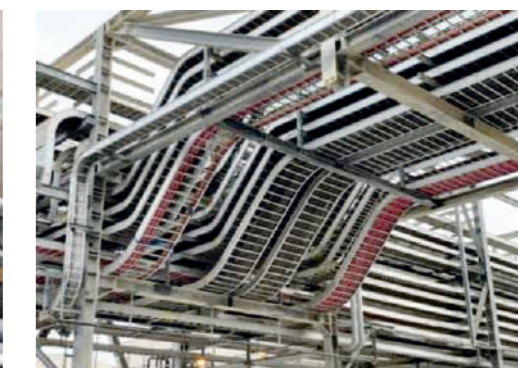
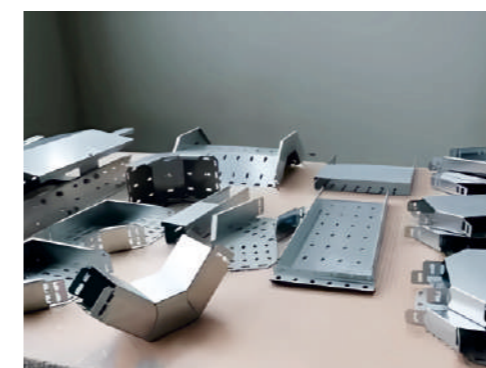
MATERIAL: MS, Pre Galvanized

SURFACE FINISH: Powder Coating, Hot Dip Galvanizing, Zinc Plating

NOMENCLATURE FOR CABLE TRAY

Example: **SM - OCT - P - H - W - T**

- SM brand
- OCT - Open Type Cable Tray
CTC - Closed Type Cable Tray
- P - Perforated Type
L - Ladder Type
- H - Height
- W - Width
- T - Thickness





Solmech Engineering set technologically advanced manufacturing facility at Bakrol, around 10 KM from Odhav, Ahmedabad city on Indore Highway for manufacturing high quality Cold Roll Formed Sections/Profiles ..“Solmech Engineering” Established in the year 2019 we are a prominent firm that is engaged in manufacturing a wide range of Solar Mounting Structure, Solar Purlins, Solar Power Plants, Cable Trays, Cable Tray mounting system, etc Apart from this, we also provide Installation Service of our own products Located in Ahmedabad (India), we offered products as per the set industry norms.

P: +91 98254 90075 | +91 98254 90034

E: hello@solmechengineering.com

W: solmechengineering.com



Plot no. 58, Pavan Industrial Estate, Bakrol-Bujarang Road
Bakrol - 382330, Gujarat, India